

MT Series Mobile Mast



Summary ~ ITS MT Series ~ Multi-purpose Mobile Mast System

- A multi-purpose drawbar trailer with a standard 8,000lb (3,628kg) capacity GVWR ~ to 2,500lbs (1,134kg) of available transport payload capacity; tandem 5,200lb (2,358kg) capacity each, heavy-duty Dexter EZ flex axles, all-wheel electric or optional hydraulic/surge “free-backing” brakes, telescopic outrigger stabilizing system, 12V/24V arctic/desert wiring and LED lighting package, adjustable height 2-5/16” ball coupler or pintle; “D-ring” style integrated tie down and lifting provisions, leveling devices, storage containment, impact and weather resistant black polyurea trailer coating
- Standard mast elevations include $\pm 32'0''$ (9.7m), $\pm 44'0''$ (13.4m) and $\pm 62'0''$ (18.8m) AGL heavy-duty and super heavy-duty locking telescopic pneumatic masts, self-supporting and guy capable, rugged construction, high-strength heat treated aluminum tubes & collars, low-friction synthetic bearings, shock absorbing bumpers; includes mast base plate and external brackets; 150lbs to 450lbs (68kg–204kg) payload capacity
- Heavy-duty, 120/220VAC/50-60Hz limit switch controlled electric winch or tandem hydraulic cylinder tilt assembly, integrated safety features; trailer-level NEMA 4 locking enclosure houses mast operating controls – tilt and telescoping functions; onboard compressor system with convenient external power switch

The **MT Series** model designates an 8,000lb (3,628kg) capacity Gross Vehicle Weight Rating (GVWR) – 4,400lb (1,995kg) GAWR - heavy-duty trailer and mast system designed to transport its integrated payload and support customer or ITS-installed equipment in a gross platform area comprising $\pm 15'0''$ (4.57m) x $7'0''$ (2.13m); net usable of ± 86 sq. ft./8 sq. m As designed, the trailer’s skeletal frame is engineered with a minimum factor of safety of 2:1, with 4:1 in critical load areas. A multi-section heavy-duty pneumatic locking mast is designed to transport horizontally over the trailer’s forward platform, automatically tilt by means of an HD electric cable winch or tandem hydraulic cylinder assembly and extend to its full height utilizing an onboard compressor. The **MT Series** is capable of being deployed, elevated to full-height and secured by individual mast-section locks by one person in under 20 minutes.

ITS MT Series ~ Drawbar Trailer Specifications

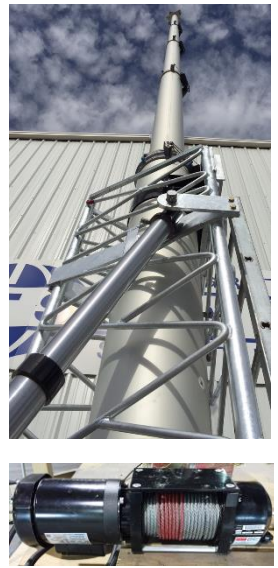
- GVWR 8,000lb (3,628kg) Capacity; GAWR 3,800lb (1,723kg) Capacity
- Dual 5,200lb (2,358kg) Dexter Axles; 8,000 lb (3,628kg) EZ Suspension
- Transport Length $\pm 18'0''$ (5.49m); Transport Height $\pm 7'3''$ (2.23m)
- Trailer Length $\pm 18'0''$ (5.49m); Width $7'0''$ (2.13m); Deck $\pm 26''$ (66cm)
- Platform Area $\pm 15'0''$ (4.57m) x $7'0''$ (2.13m); 62” (1.58m) between the Fenders
- Solid Steel Construction – 6” (15.24cm) Channel; Min. 50Ksi Yield Strength
- 1/8” (0.33cm) Steel Plate Deck and Fenders; Welded Construction
- Weight w/out Customer or ITS-Installed Accessories to $\pm 5,000$ lbs (2,291kg)
- Customer Payload Transport Capacity to 2,500 lbs (1,134kg)
- Four (4) HD Outriggers; Min. 8,000lb (3,628kg) Static Load Jacks
- Electric or Optional Surge Brakes; ST235/80R16 LRE Tires
- Full Sized Spare with 16” (41cm) x 6k 8 hole Disc Wheel
- Min. 8,000lb (3,628kg) Static Load, Adjustable Trailer Jack
- Emergency Break-away Device; LED Lighting Package
- Arctic/Desert Wiring; D-ring Lift and Tie-Down Provisions
- 2-5/16” (5.9cm) Coupler or Pintle Eye; P-70 Chains & Hooks
- 7-Blade Truck Connector, Operating/Maintenance Manual
- Locking Steel Storage Box & Compressor Enclosure
- DOT Safety Decals; Reflectors; Multiple Trailer Levels
- Black Painted with Impact/Weather Resistant Polyuria Coating

Pneumatic Mast Selection ~ Will-Burt Models from 30'0" (9.1m) to 60'0" (18m)

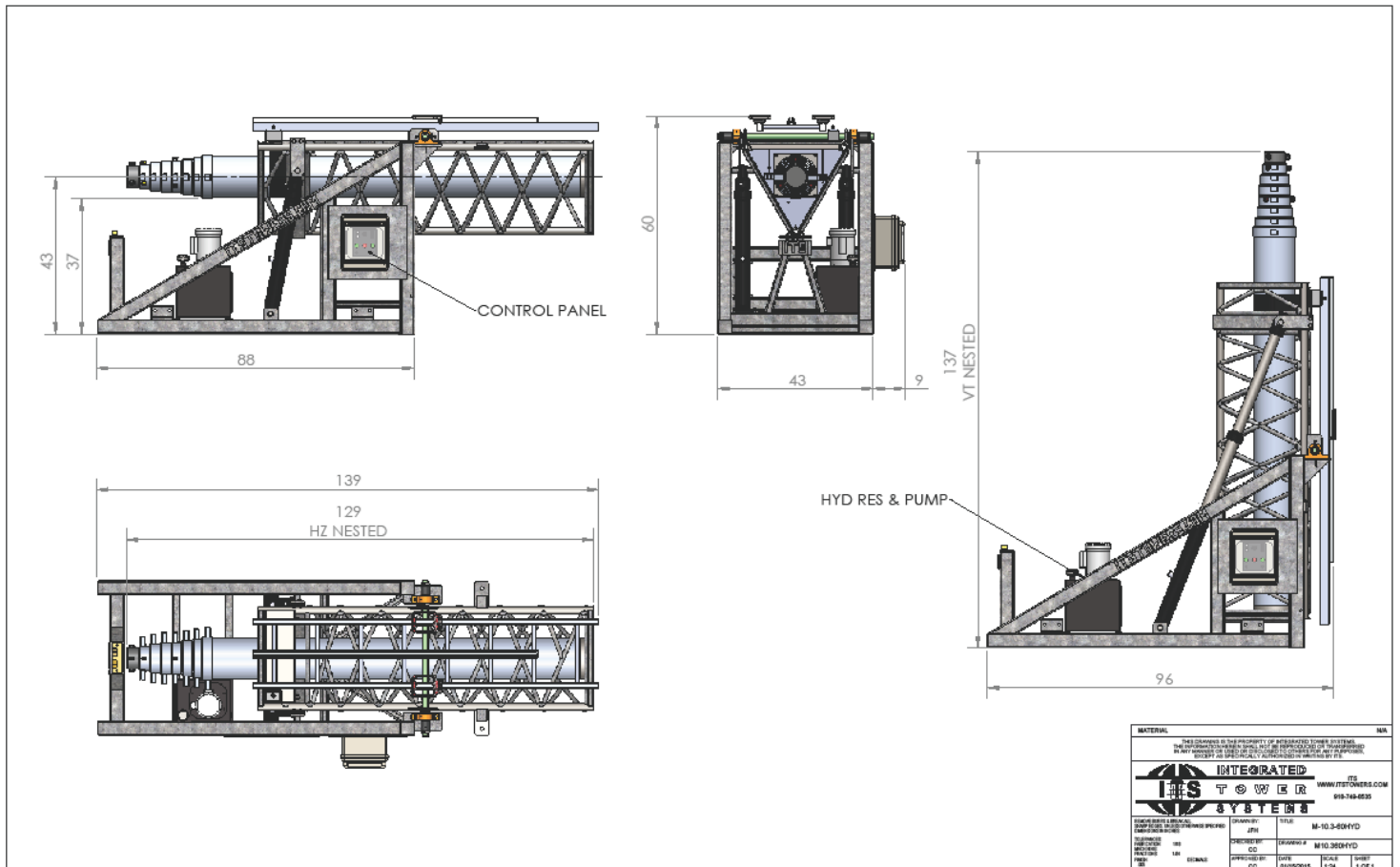
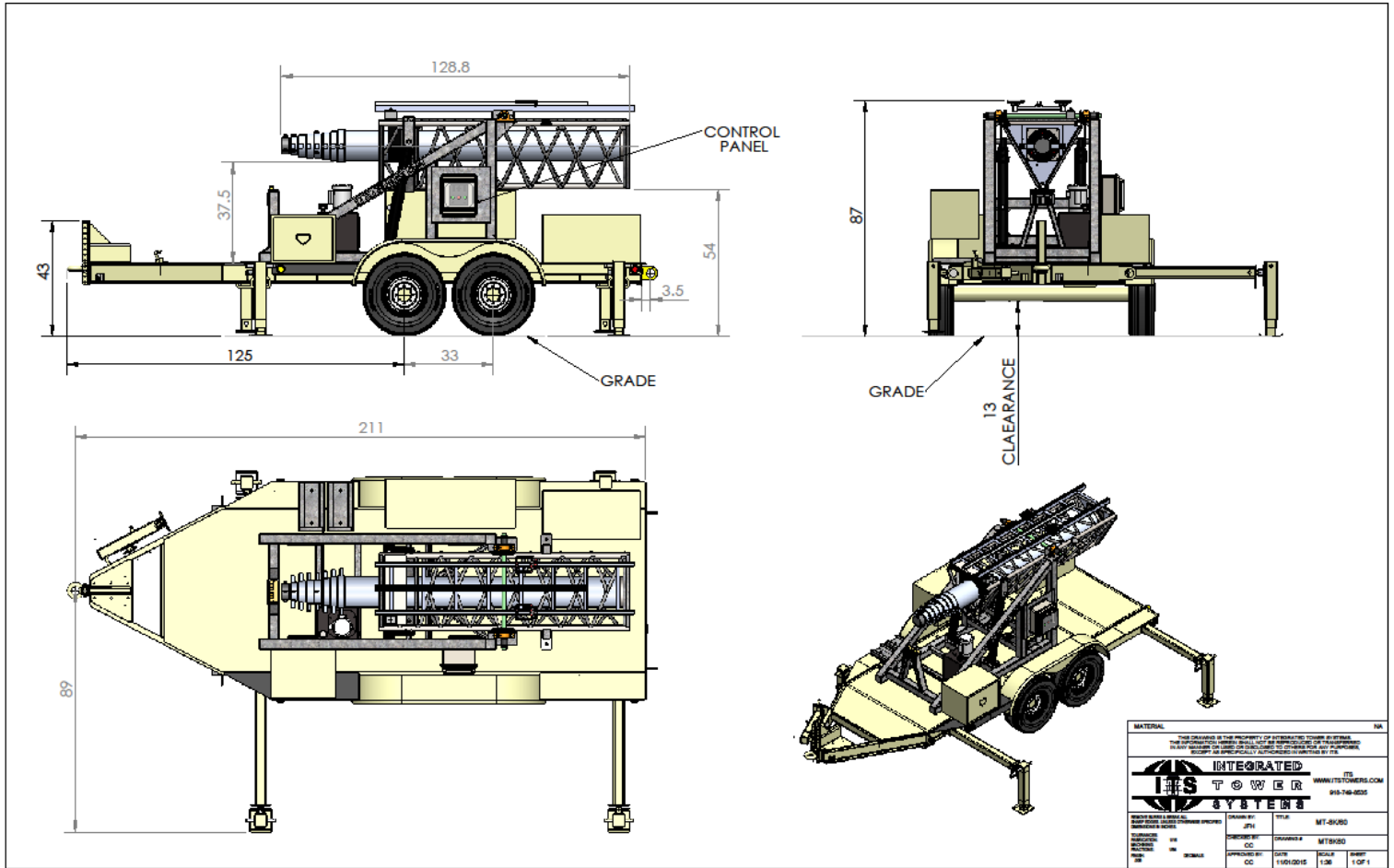
The primary benefits and features of the Will-Burt pneumatic mast includes:

- » Locking collars allow the mast to remain extended indefinitely without air pressure
- » Rugged construction of high strength heat-treated aluminum tubes and collars with low friction synthetic bearings
- » Two full-length external keys on sections; collars have matching keyways that maintain directional azimuth
- » The bumpers are designed to reduce shock on extension and retraction
- » All exterior aluminum surfaces are anodized & sealed for long life; fasteners are plated steel for corrosion resistance
- » Payload capacity of the most appropriate mast models range from 150lbs to 450lbs (68kg – 204kg)
- » ITS secures the pneumatic mast within a heavy-duty lattice steel exoskeleton (“truss”) that protects the mast during the tilt function and offers added strength and stability to the extended mast structure
- » The truss-enclosed mast is secured to a square tube steel support structure that provides maximum protection and minimal deflection/vibration during primary and multi-terrain transport as well as during mast operation

REPRESENTATIVE MT SERIES MOBILE MAST
 (Shown with Optional Features/Accessories)

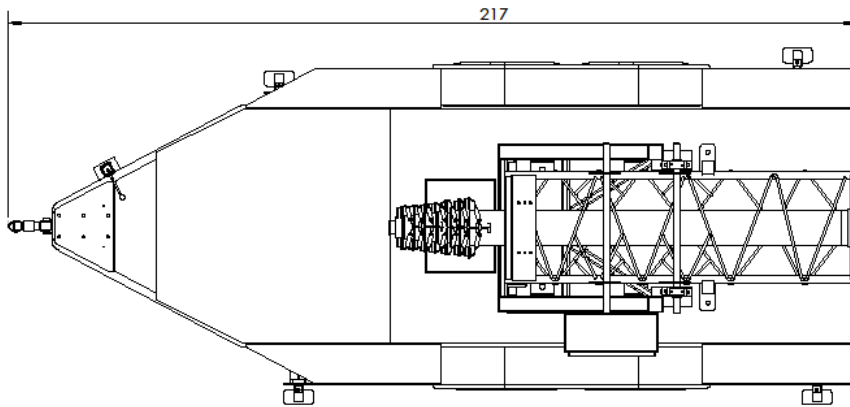
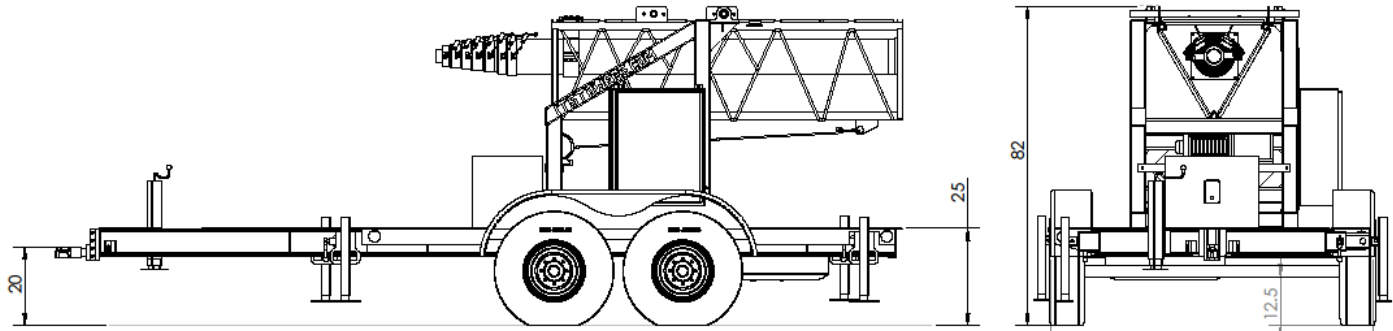


REPRESENTATIVE MT SERIES MOBILE MAST
(Hydraulic Tilt Assembly / 60' (18m) SHDL Mast)

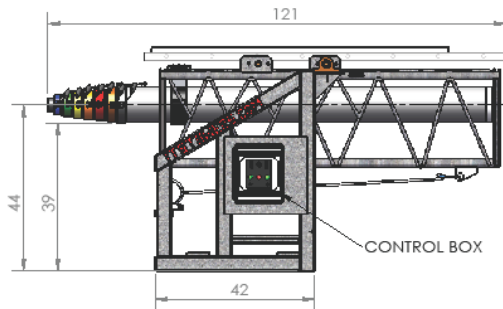


REPRESENTATIVE MT SERIES MOBILE MAST

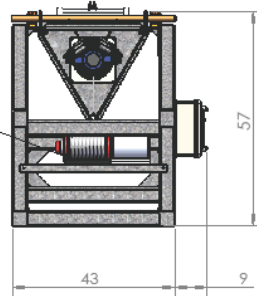
(Electric Winch Tilt Assembly / 60' (18m) Mast)



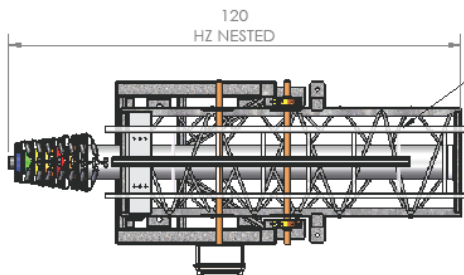
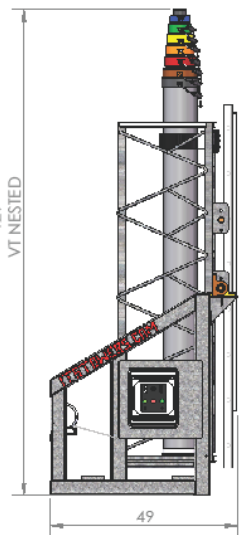
MATERIAL		NA	
<p>THIS DRAWING IS THE PROPERTY OF INTEGRATED TOWER SYSTEMS. IT IS TO BE USED ONLY FOR THE PROJECT AND SITE SPECIFICALLY IDENTIFIED HEREON. IT IS NOT TO BE REPRODUCED, COPIED, OR TRANSMITTED IN ANY FORM OR BY ANY MEANS, ELECTRONIC OR MECHANICAL, INCLUDING PHOTOCOPYING, RECORDING, OR BY ANY INFORMATION STORAGE AND RETRIEVAL SYSTEM, WITHOUT THE WRITTEN PERMISSION OF INTEGRATED TOWER SYSTEMS.</p>			
		<p>ITS WWW.ITS-TOWERS.COM 913-749-8235</p>	
DESIGNED BY	ZFH	DATE	MT-7080
DRAWN BY	CC	SCALE	MT-7080
CHECKED BY	CC	PROJECT	TEL WINCH
APPROVED BY	CC	DATE	SCALE
DATE	2015	SCALE	HEET
NO.	1	OF 2	



ELEC WINCH



129'
 VT NESTED



LADDER
 w/safety tether
 (OPTIONAL)

MATERIAL		NA	
<p>THIS DRAWING IS THE PROPERTY OF INTEGRATED TOWER SYSTEMS. IT IS TO BE USED ONLY FOR THE PROJECT AND SITE SPECIFICALLY IDENTIFIED HEREON. IT IS NOT TO BE REPRODUCED, COPIED, OR TRANSMITTED IN ANY FORM OR BY ANY MEANS, ELECTRONIC OR MECHANICAL, INCLUDING PHOTOCOPYING, RECORDING, OR BY ANY INFORMATION STORAGE AND RETRIEVAL SYSTEM, WITHOUT THE WRITTEN PERMISSION OF INTEGRATED TOWER SYSTEMS.</p>			
		<p>ITS WWW.ITS-TOWERS.COM 913-749-8235</p>	
DESIGNED BY	ZFH	DATE	M-10-3-002
DRAWN BY	CC	SCALE	M-10-40 SERIES
CHECKED BY	CC	PROJECT	TRUCK CRANE
APPROVED BY	CC	DATE	SCALE
DATE	20/02/016	SCALE	HEET
NO.	1	OF 1	

